

NEW Mini Crawler Crane

MC815C



Crane Capacity
8.0t × 2.4m

Max Lifting Height
19.6m

1.5t Hydraulic Type Optional Fly Jib
Max Lifting Height **25.5m**

Pick & Carry Capacity **1.0t**

**Technology
in
motion**



New 10.4 inch
Touchscreen Multi Monitor

Power Lifting Mode

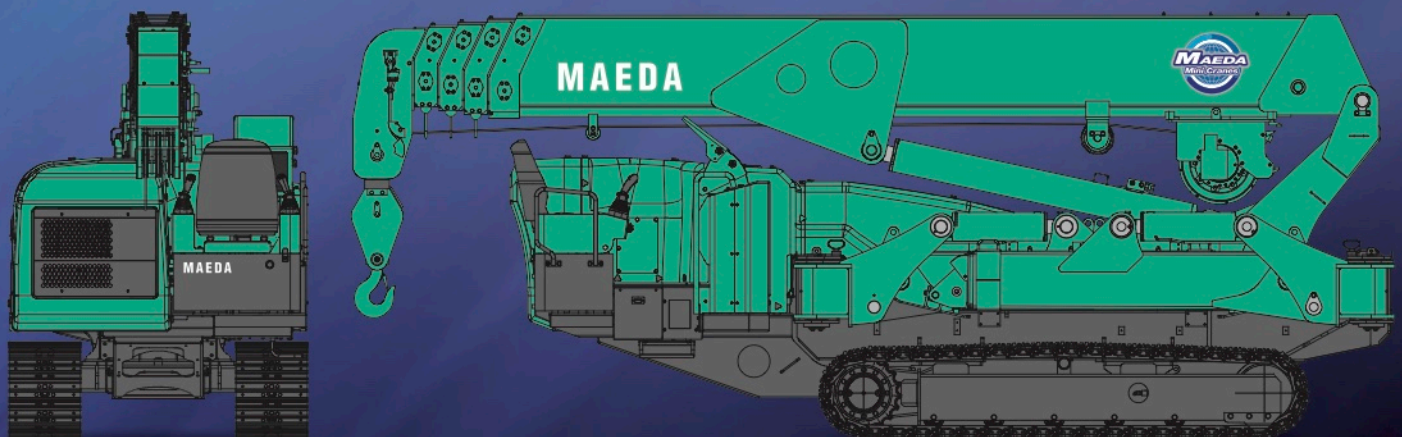
Joystick Type Radio Remote Control

Self Leveling Function

Auto-Crane Stow Function

MSOS (MAEDA Safety Operation System)

EU Stage III B Compliant Engine (DPF type)



Specifications

Model		MC815C
Crane capacity		8.0t × 2.4m
Max. working radius		18.8m × 0.3t
Max. lifting height (on the ground)		19.6m × 2.9t (25.5m × 1.5t with fly jib)
Max. reach below ground level		-21.0m (6 falls) / -34.0m (4 falls) / -68.0m (2 falls) / -136.0m (single fall)
Pick & Carry capacity		1.0t
Overall length × width × height		5,900mm × 1,670mm × 2,400mm
Machine weight		9,000kg (9,300kg with electric motor)
Winch system	Hoist wire rope	IWRC 6 × Fi(29) φ10 × 160m
	Type	Fully automatic 5-section pentagonal telescopic boom
Telescopic system	Boom length	5.52 ~ 19.40m
	Boom hoist system	Hoist angle 0 ~ 80deg
Swing system	Swing angle	360deg continuously
Outrigger system	Type	Extended Hydraulic cylinder direct acting Setting up Hydraulic cylinder direct acting
	Max. extended width	(Lateral) 6,770 x (Front) 6,300 x (Rear) 6,520
Travel system	Type	Hydraulic motor driven, stepless speed changer
	Gradability	20 deg
	Crawler ground length × width	2,275mm × 400mm
Engine	Ground pressure	47.8kPa (0.49kgf/cm ²)
	Model	YANMAR 4TNV88
	Displacement	2.189L (2.189cc)
	Rated output	30.5kw / 2,500min ⁻¹
	Starting method	Electric starting
	Fuel / Fuel tank capacity	Diesel / 70.0
E-Motor	Motor type	Totally enclosed fan-cooled motor 15kw, 4P 380V
	Starting system	Inverter system (30Hz-60Hz)
Remote control system	Type	Radio & Proportional joystick control
	Micro/High speed mode	Available
	Load display for transmitter	Available
	Outrigger operation	Available
	Travelling operation	Available
Safety device	Overwind protection, Load indicator, Hydraulic safety valve, Wire rope latch, Level, Machine body inclination alarm, EMO switch, Outrigger interlock device, MSOS, Moment limiter, Rotary lamp, Slew restriction system	
	Optional items	Rubber pads, Single fall hook, Searcher hook (1.0t), Hydraulic type Fly jib (1.5t)

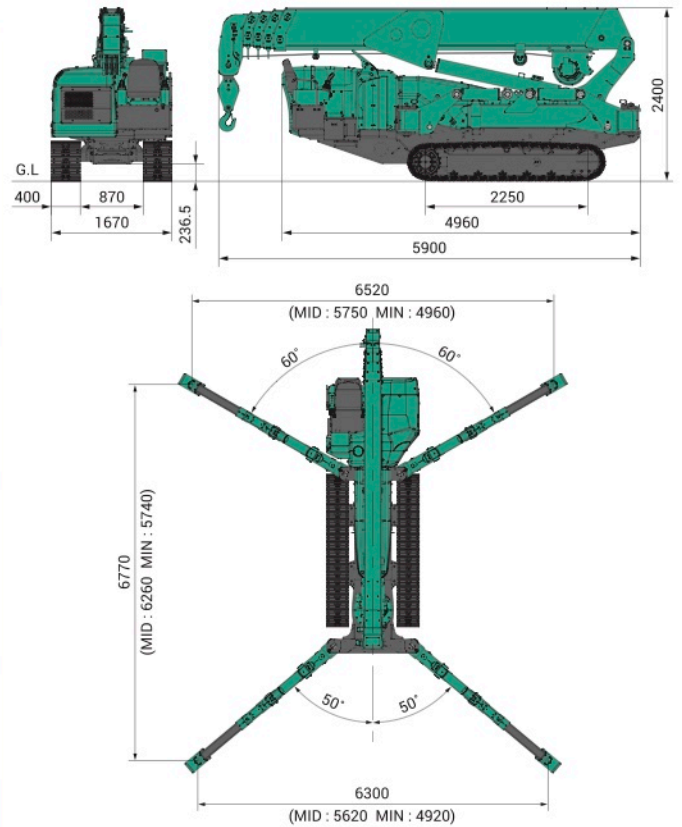
* Due to improvements, the specifications are subject to change without notice.

Rated Total Load Chart (6falls) Outriggers Max Extended unit: kg

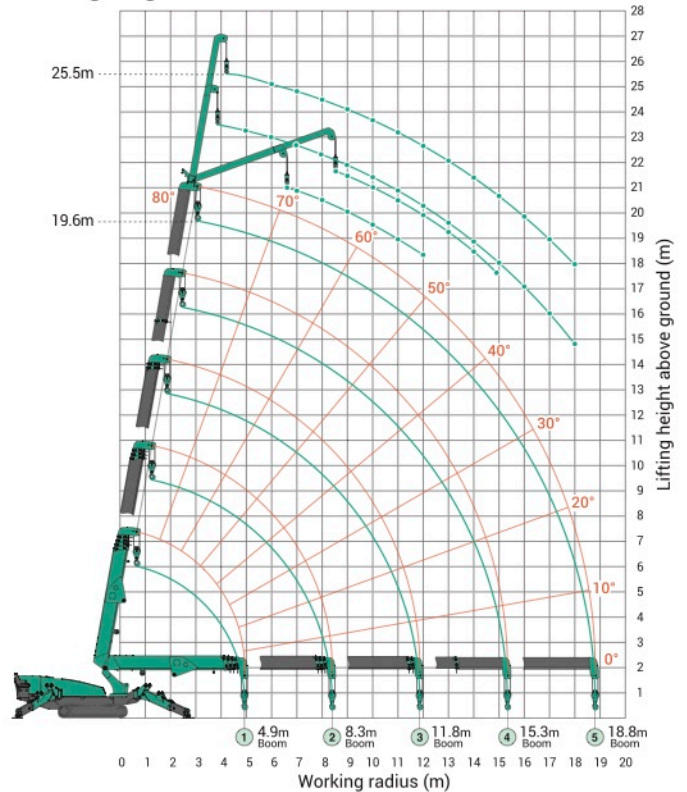
Working radius (m)	Boom ①		①+②		①+②+③		①+②+③+④		①+②+③+④+⑤	
	N mode	P mode	N mode	P mode	N mode	P mode	N mode	P mode	N mode	P mode
2.4	8000	8000	6900	6900	5200	5200				
2.5	7500	7500	6900	6900	5200	5200	3500	3500		
3.0	7200	7200	6900	6900	5200	5200	3500	3500		
3.5	6300	6300			5200	5200	3500	3500	2900	2900
4.0	5500	5500	5400	5400	5200	5200	3500	3500	2900	2900
4.5	4800	4800					3500	3500	2900	2900
4.92	4300	4300					3500	3500	2900	2900
5.0			4300	4300	4200	4200	3500	3500	2900	2900
6.0			3400	3400	3400	3400	3000	3000	2900	2900
7.0			3000	3000	2800	2900	2500	2500	2300	2300
8.0			2400	2400	2050	2200	2050	2200	2000	2000
8.39			2200	2300						
9.0					1600	1800	1600	1800	1600	1700
10.0					1200	1400	1200	1400	1200	1300
11.0					950	1100	950	1100	950	1100
11.86					800	950				
12.0							800	950	800	950
13.0							750	900	750	900
14.0							650	750	650	750
15.0							550	650	550	650
15.33							500	600		
16.0									500	600
17.0									450	550
18.0									400	500
18.8									300	400

*The rated total load chart is based on the actual working radius including boom deflection.
 *The weight of hook block (6 falls-90kg) must be included as part of the load shown in the rated total load chart.
 *N mode applies to 360 deg slew range, P mode is available only for certain slew area.
 *Due to improvements, the rated total load charts are subject to change without notice.

Dimensions



Working Range Chart



Due to improvements, the specifications are subject to change without notice.

Before use, please read the Operation Manual



MAEDA SEISAKUSHO CO., LTD.

Head office | No.1095, Onbegawa, Shinonoi, Nagano-City, Nagano-Pref. 388-8522 Japan
 TEL.+81(0)26 292 2228 FAX.+81(0)26 293 8499
 URL : www.maedaminicranes.com E-mail : contact@maesei.co.jp

TCA Lifting Ltd
 +44 (0)845 603 5360
info@tcalifting.com
www.tcalifting.com

