

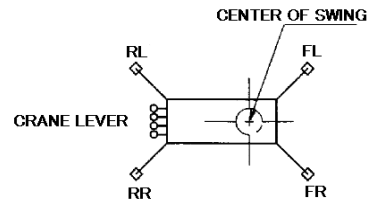
MC-305C OUTRIGGER REACTION FORCE CALCULATION

WORKING RADIUS 7000 mm

LIFTING LOAD 380 kg

STAGE 5

EXTENDED OUTRIGGERS MID (MAX, MID, MIN)



| θ | FR | FL | RL | RR |
|----------|------|------|------|------|
| 0 | 553 | 553 | 1729 | 1729 |
| 5 | 532 | 577 | 1614 | 1841 |
| 10 | 516 | 603 | 1497 | 1947 |
| 15 | 509 | 629 | 1382 | 2044 |
| 20 | 510 | 652 | 1272 | 2130 |
| 25 | 522 | 671 | 1167 | 2202 |
| 30 | 547 | 685 | 1071 | 2260 |
| 35 | 583 | 693 | 986 | 2301 |
| 40 | 634 | 692 | 912 | 2325 |
| 45 | 697 | 684 | 850 | 2331 |
| 50 | 774 | 668 | 802 | 2318 |
| 55 | 863 | 645 | 768 | 2288 |
| 60 | 964 | 614 | 746 | 2239 |
| 65 | 1074 | 577 | 738 | 2175 |
| 70 | 1191 | 536 | 741 | 2096 |
| 75 | 1315 | 491 | 754 | 2004 |
| 80 | 1441 | 445 | 776 | 1901 |
| 85 | 1568 | 400 | 806 | 1790 |
| 90 | 1692 | 358 | 841 | 1673 |
| 95 | 1812 | 321 | 878 | 1552 |
| 100 | 1923 | 291 | 917 | 1432 |
| 105 | 2024 | 270 | 956 | 1313 |
| 110 | 2113 | 261 | 991 | 1199 |
| 115 | 2186 | 264 | 1022 | 1092 |
| 120 | 2242 | 281 | 1046 | 994 |
| 125 | 2280 | 312 | 1064 | 907 |
| 130 | 2298 | 359 | 1074 | 832 |
| 135 | 2296 | 422 | 1075 | 771 |
| 140 | 2274 | 500 | 1067 | 723 |
| 145 | 2232 | 592 | 1050 | 689 |
| 150 | 2171 | 698 | 1026 | 669 |
| 155 | 2092 | 815 | 994 | 663 |
| 160 | 1996 | 942 | 957 | 668 |
| 165 | 1887 | 1076 | 916 | 685 |
| 170 | 1765 | 1215 | 872 | 711 |
| 175 | 1635 | 1357 | 827 | 745 |
| 180 | 1497 | 1497 | 784 | 784 |

| | | | | |
|-----------------|-------------|-------------|-------------|-------------|
| MAX (kg) | 2298 | 1497 | 1729 | 2331 |
|-----------------|-------------|-------------|-------------|-------------|

(kg)