

UR-W295C



UR-W295C is narrow enough to allow access through standard size single doorway, but with 2.93t of lifting power.

UNIC original stability sensor system provides the benefit of turnover protection for safety. Its outriggers allow for independent multi-angle configurations to place at the best position in restricted or confined area. Easy and quickly installed searcher hook and fly jib options will increase working radius and lifting height further more.

Max 8.41m
Working radius

Radio remote control

Max 8.8m

Hook height (Approx.)
(Above ground level)

Max 2.93t
×1.4m
Lifting capacity

1850kg
Mass of crane

with electric power unit

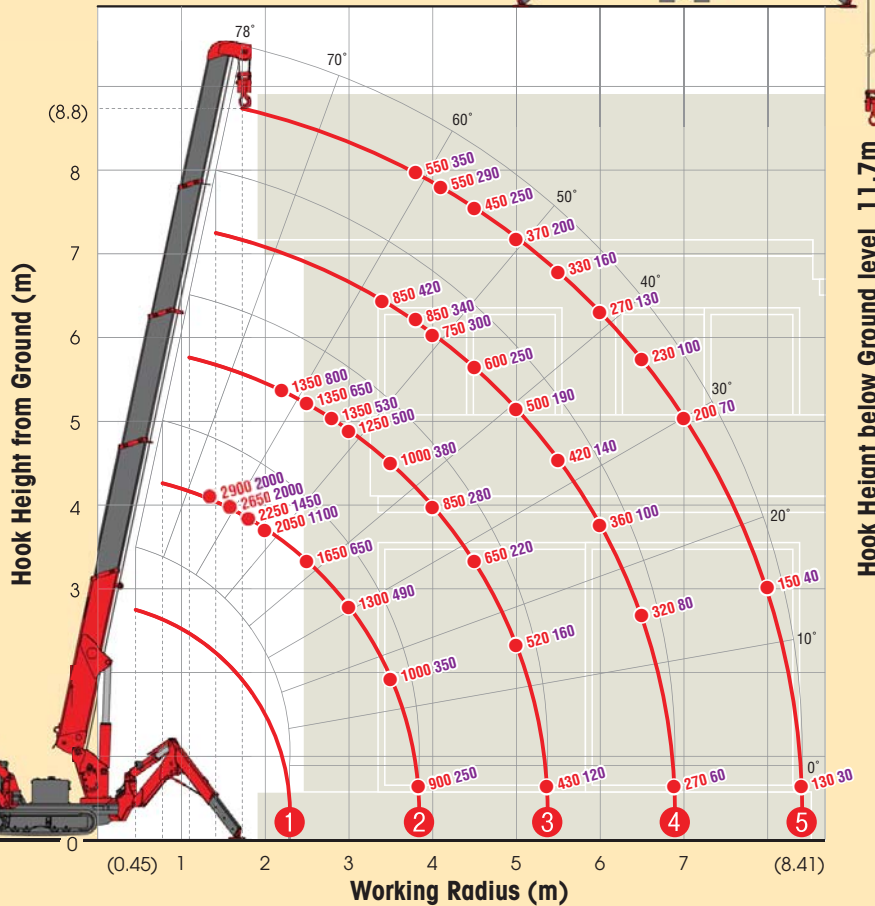
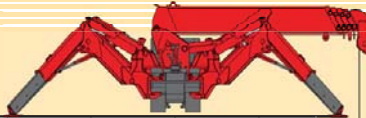


SPECIFICATIONS

Crane model	UR-W295C	UR-W295C1	
Lifting capacity	Max. 2.93t at 1.4m		
Working radius	Min. 0.45m, Max. 8.41m		
Hook height (Approx.)	Above ground level	Max. 8.8m	
	Below ground level	Max. 11.7m with 4-part line	
Boom	Length		
	Min. 2.53m to Max. 8.65m		
	Extending speed	6.12m / 20.0 sec.	6.12m / 22.0 sec.
	[with electric power unit]	[50Hz] 6.12m / 34.0 sec. [60Hz] 6.12m / 28.0 sec.	[50Hz] 6.12m / 33.0 sec. [60Hz] 6.12m / 28.0 sec.
Raising angle / speed	0° to 78° / 11.0 sec.	0° to 78° / 12.0 sec.	
[with electric power unit]	[50Hz] 0° to 78° / 18.0 sec. [60Hz] 0° to 78° / 15.0 sec.	[50Hz] 0° to 78° / 18.0 sec. [60Hz] 0° to 78° / 15.0 sec.	
Structure	5-section box beam type telescoping boom		
Winch	Single line speed		
	40.0 m/min (at 4th layer)		
	[50Hz] 22.0 m/min (at 4th layer) [60Hz] 27.0 m/min (at 4th layer)		
	[with electric power unit]		
Hook speed		10.0 m/min (at 4th layer with 4-part line)	
[with electric power unit]	[50Hz] 5.5 m/min (at 4th layer with 4-part line) [60Hz] 6.7 m/min (at 4th layer with 4-part line)		
Structure	Hydraulic motor driven, spur gear reduction, with automatic mechanical brake		
Wire rope	Construction : IWRC 6 x WS(26) GRADE B / Diameter x Length : 8mm x 54.0m / Breaking strength : 42.4kN [4320 kgf]		
Hook block	2.90t capacity, 2 sheaves with safety latch		
Slewing	Range		
	360° continuous rotation on a ball bearing race		
	Speed [with electric power unit]	1.5 rpm [50Hz] 1.5 rpm [60Hz] 1.5 rpm	
Structure	Trochoid motor, worm gear reduction, spur gear reduction, and worm self-locking brake (supported by ball bearings)		
Outriggers	2-section (with damper) for bend and 3-section extension. Double acting hydraulic cylinders with pilot-operated check valves, direct pushing type (Directly connected with hydraulic automatic lock device)		
	Type	Variable delivery piston pump	
	Rated pressure	21.6 MPa [220 kgf/cm ²]	
	Rated delivery	38 liters/min	30 liters/min
Rated revolution	2000 rpm	2600 rpm	
Hydraulic oil tank capacity	27 liters		
Safety devices	Pressure relief valve for hydraulic circuit / Counterbalance valves for boom raising and boom telescoping cylinders / Pilot-operated check valves for outrigger cylinders / Boom angle indicator with load indicator / Hook safety latch / Automatic mechanical brake for winch / Automatic stop for overwinding / Overwinding alarm / Automatic stop for leaving minimum wire rope / Emergency stop button (Ignition cut) / Inter-lock device of crane and crawling levers / Inter-lock device of crane and outriggers / Level / Turn over prevention device / Load meter		

WORKING RANGE & NET RATED LOADS (kg)

Outrigger ● Max-extended NOT max-extended

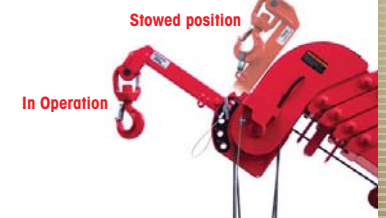


Hook Height below Ground level 11.7m

Load meter

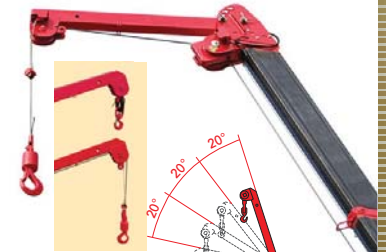


Searcher hook assembly (Options)



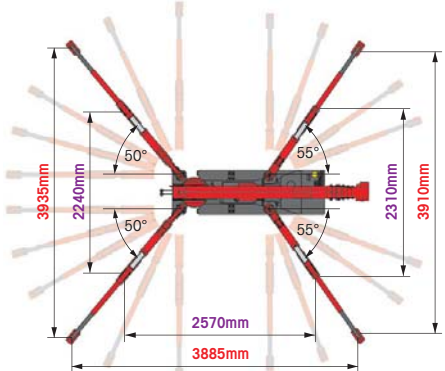
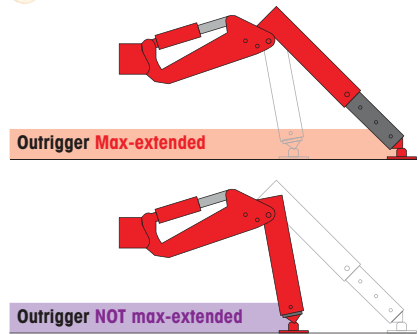
Length	500mm
Lifting capacity	Max. 300kg
Tilt angles	0°, 20°, 40°, 60°

Fly jib assembly (Options)

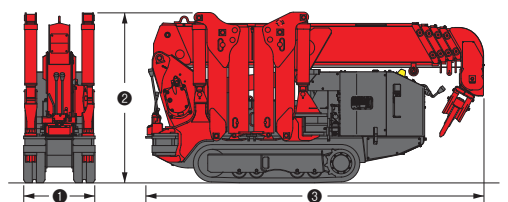


Length	1.5m
Lifting capacity	Max. 700kg
Tilt angles	0°, 20°, 40°, 60°

OUTRIGGER POSITIONS



DIMENSIONS



CRAWLING GEAR

Crane model	UR-W295C	UR-W295C1
Crawling speed [with electric power unit]	0~2.3 km/h, forward / reverse [50Hz] 0~1.2 km/h [60Hz] 0~1.4 km/h	0~2.0 km/h, forward / reverse [50Hz] 0~1.2 km/h [60Hz] 0~1.4 km/h
Hill climbing ability	20°	20°
Tread length	1050mm	1050mm
Ground contact pressure [with electric power unit]	48.0 kPa [0.49 kgf/cm ²] 51.4 kPa [0.52 kgf/cm ²]	49.8 kPa [0.51 kgf/cm ²] 52.9 kPa [0.54 kgf/cm ²]
Engine manufacturer / model	Mitsubishi / GB400LE	Kubota / Z482-E3B
Displacement	391cc	479cc
Maximum output	6.6kW(9.0PS) / 1800 rpm, Rated output	7.4kW(10.0PS) / 2600 rpm, Rated output
Fuel	Petrol	Diesel
Fuel tank capacity	6 liters	10 liters
Steering	Hydraulic drive independent of left / right	Hydraulic drive independent of left / right
Starter	Starter motor (Recoil starter)	Starter motor

Crane model	UR-W295C	UR-W295C1
① Total width	600mm	
② Total height	1375mm	[1430mm]
③ Total length	2690mm	2730mm
Mass of crane	1850kg [1980kg]	1920kg [2040kg]

[with electric power unit]

Electric power unit specifications

Rated power	3.7kW (3-phase 4 poles)
Voltage	AC 200V or 400V (50Hz / 60Hz) 3 phase 4P

*Not included any cables.